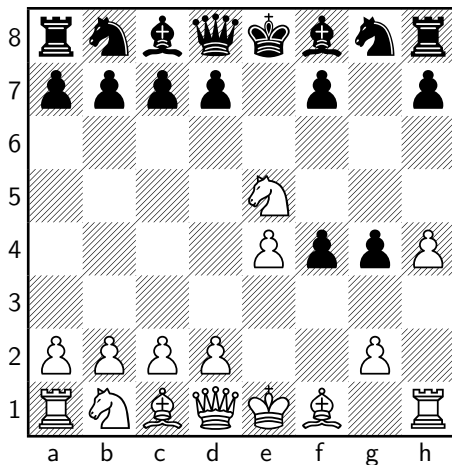
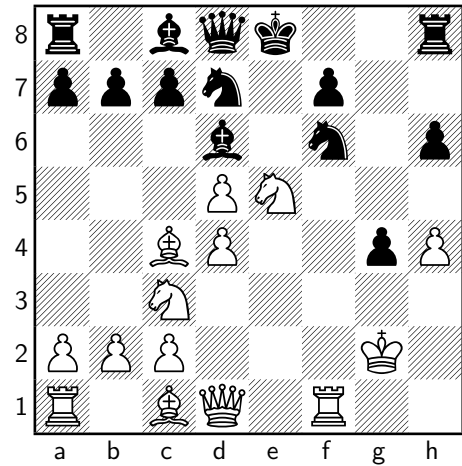


1 e4 e5
 2 f4 exf4
 3 ♖f3 g5
 4 h4 g4
 5 ♗e5 (Diagram)



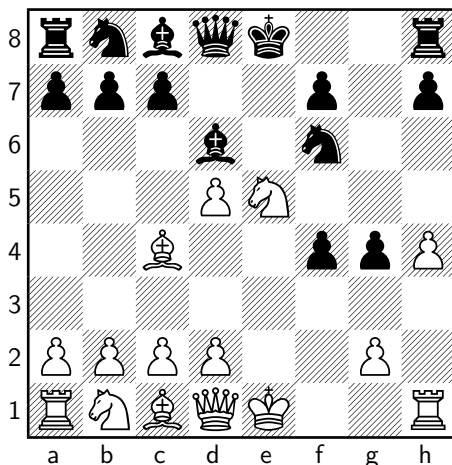
11 ♖c3 ♗bd7 (Diagram)



When I played the position, I just thought that this will be a long battle. However when I analyzed the game later on, the engine showed that I had a winning advantage (with evaluation score 3.19).

Kieseritzky Gambit.

5 ... ♗f6
 6 ♘c4 d5
 7 exd5 ♘d6 (Diagram)



I was out of book by now. The last Black move is not in my database, so I had to figure out my own moves from now on.

8 d4

Protected the knight and opened the diagonal for my dark squared bishop.

8 ... f3?

The move seemed strong but my engine showed that piece play like 8... ♖e7 or 8... ♗h5 are better.

9 O-O

Brought my rook into f-file. 9 gxf3 might be better.

9 ... fxg2?

It was tempting to bring my king out of place. However, black should bring out pieces instead of moving pawns.

10 ♗xg2 h6

...h6 prevented me from putting the dark squared bishop ideally on g5. I started to develop my queen side pieces.

12 ♘f4

I tried to bring the dark squared bishop into play. Here, my engine recommended to pin the knight as 12 ♘b5.

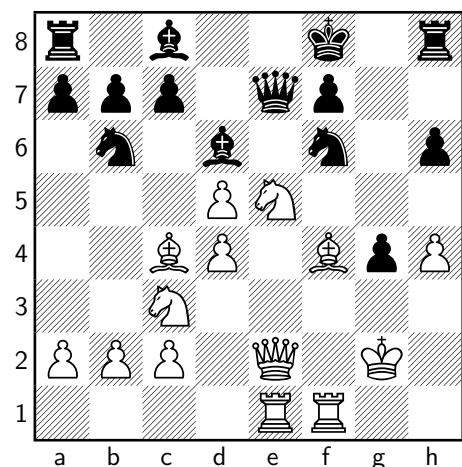
12 ... ♗b6
 13 ♖e2??

13 ♘b5+ c6 14 dxc6 is much better.

13 ... ♖e7?

. It seems that both white and black were keeping making mistakes. 13... O-O would be better.

14 ♖ae1 ♗f8?? (Diagram)



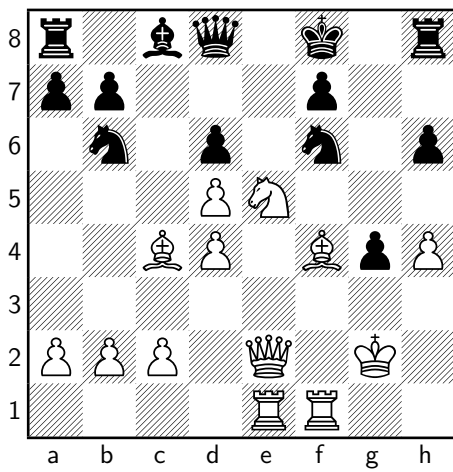
15 ♗b5??

Both white and black are making serious blunders. After 15 ♗g6+ ♖g7 16 ♗xe7, white can win a queen!. The good black move is actually 14... Kd8, which is not obvious. The intention of my move ♗b5 is to remove the troublesome black bishop sitting at d6.

15 ... ♖d8??

Another big blunder. ... ♗g7 would be better.

16 ♗xd6 cxd6 (Diagram)



At this point, I felt quite frustrated that my knight has no place to go at all, so I tried to search some wild moves. And indeed I found one. Note that the chess engine actually evaluates current position as a huge winning score 11.5, but how could I know that?

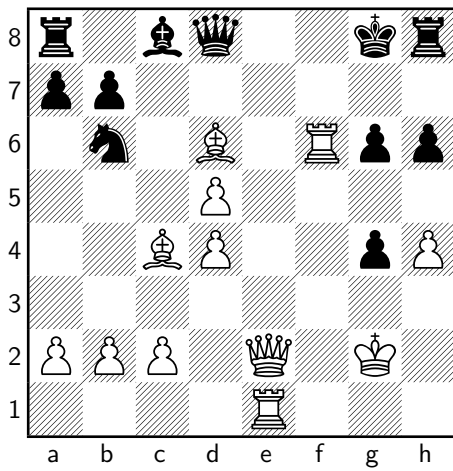
17 ♘g6+ f×g6
 18 ♙×d6+ ♖g8

This is the mild move I found. But my calculation was actually 18... ♙×d6 19 ♖×f6 ♙×f6 20 ♗e8+ ♖g7 21 ♖e7+ ♗×e7 22 ♗×e7+ ♖g8 23 ♗e8+, a perpetual check. So what I was aiming in move 17 is actually a draw, and I even entered the above line as conditional moves to save time.

Fortunately, my opponent found out that if Black played ... ♙×d6, white can directly play ♗e8+ thanks to the pin on the knight.

19 ♖×f6 (Diagram)

Black resigned.



What have I learned from the game? In the King's Gambit, there are many tactical possibilities. So always examine check/capture/threat before any move. There might be many surprises lurking around.