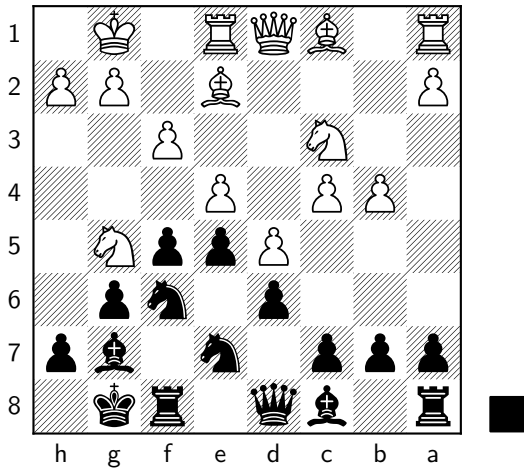


1 d4 ♘f6
 2 c4 g6
 3 ♘c3 ♙g7
 4 ♘f3 O-O
 5 e4 d6
 6 ♙e2 e5
 7 O-O ♘c6
 8 d5 ♘e7
 9 b4 ♘h5
 10 ♚e1 f5
 11 ♘g5 ♘f6
 12 f3 (Diagram)

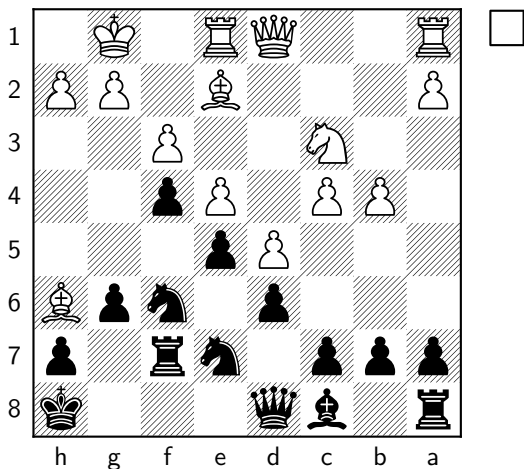


A typical position in Bayonet Attack of King's Indian Defense.

12 ... ♗h8

A strange move. But the king gives g8 square to one knight, which can be shown later.

13 ♙e3 ♙h6
 14 ♘f7+ ♚xf7
 15 ♙xh6 f4 (Diagram)



Now the center is blocked.

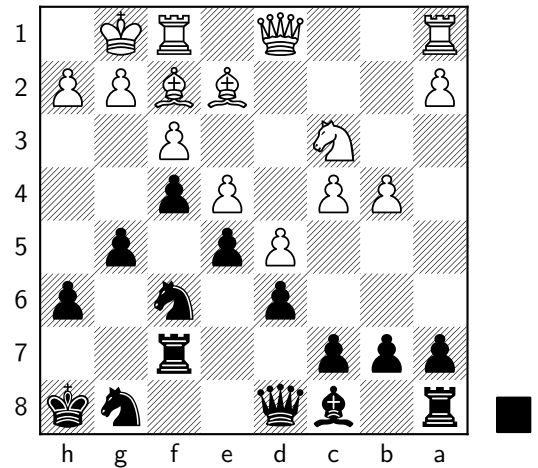
16 ♚f1

Typically White starts queenside attack with c5.

16 ... ♘eg8

I start to chase the dark-squared bishop.

17 ♙g5 h6
 18 ♙h4 g5
 19 ♙f2 (Diagram)



I gain several tempos by pushing back the dark-squared bishop.

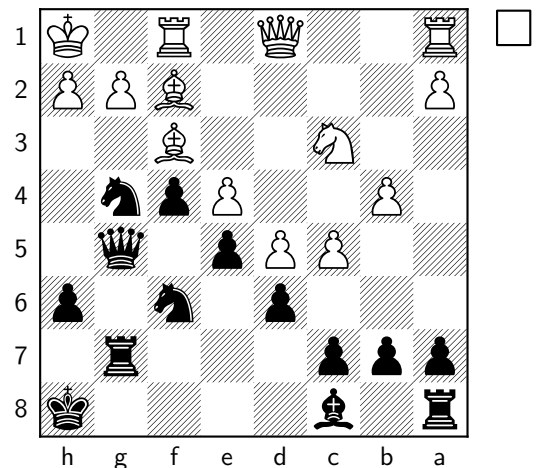
19 ... ♚g7

Bring my Rook to support g4 break.

20 c5 g4
 21 f×g4 ♘xg4
 22 ♗h1 ♙g5

Bring my queen to g-file as well.

23 ♙f3 ♘8f6 (Diagram)



24 ♙e2??

According to chess engine, White has several ways to defend the position, e.g. ♙g1, ♙e1, and White can even try counter-attack like c×d6.

24 ... ♘xh2??

I made a blunder as well. ♘xh2+ should be played, like 24... ♘xh2+ 25 ♗xh2 ♘g4+ 26 ♗g1 ♙h5 with strong attack.

25 ♚xf2 ♙g4

Bring my light-squared bishop into play.

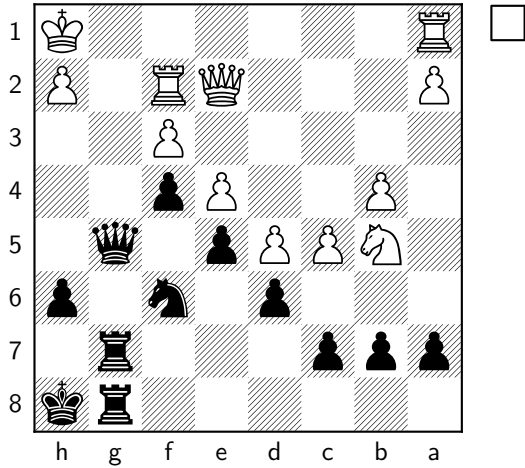
26 ♘b5?

White starts to attack my queenside. It might be better for White to focus on defense moves like ♖ff1.

26 ... ♙xf3?!

I focus on kingside attack. It might be better to consolidate queenside with moves like ... dxc5.

27 gxf3 ♖ag8 (Diagram)



I finally brings my other Rook into play.

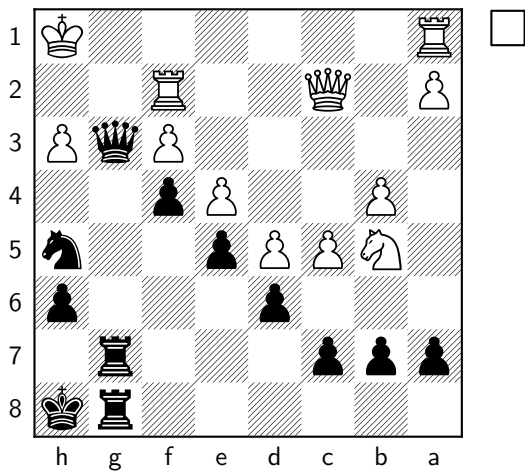
28 h3??

The only move White can still hold the position is ♖f1. According to Houdini engine, all the other moves lose the game (at least 9 point difference). But to be frank, I cannot calculate in such a deep extent.

28 ... ♘h5

Bring my knight to the attacking position. Threatens ... ♘g3+ to snap up the queen. Now all my forces are ready.

29 ♖c2 ♖g3 (Diagram)



Threatens to attack h3 and f3 pawn. White resigns. According to engine, there is mate in six by 30 ♖e2 ♖xh3+ 31 ♖h2 ♘g3+ 32 ♖g1 ♘xe2+ 33 ♖f2 ♖xh2+ 34 ♖e1 ♘d4 35 ♘xd4 ♖g1#